

The Cracked

A lamp concept by
Carl Wiechmann Rodrigues



The Cracked

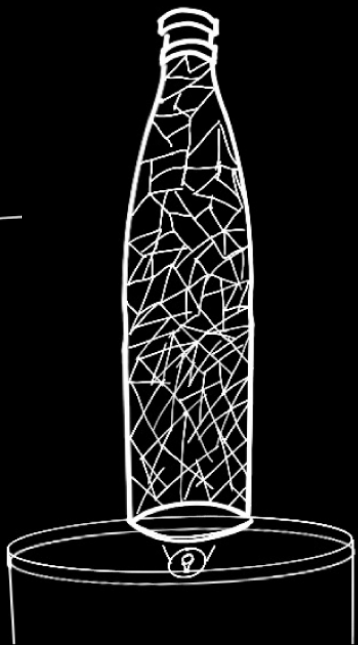
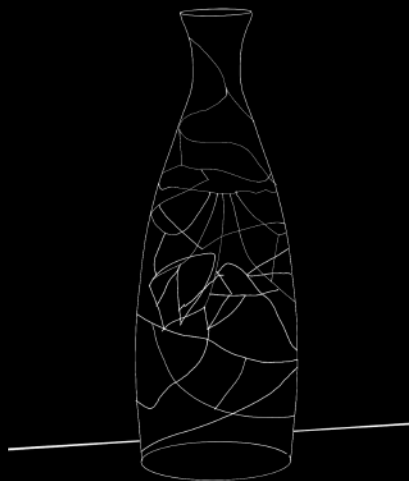
when glass undergoes an extreme temperature it often shatters into a million pieces.

just like it feels to wake up and get out of ones bed.

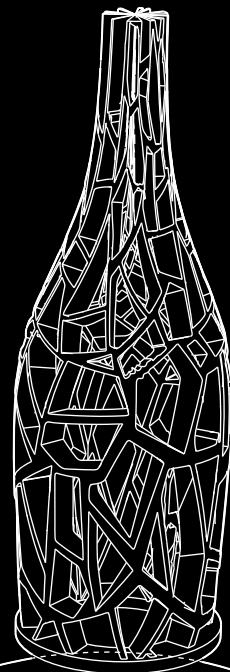
the Cracked is there to remind us that at the end of each day all breaks are healed when we sleep.



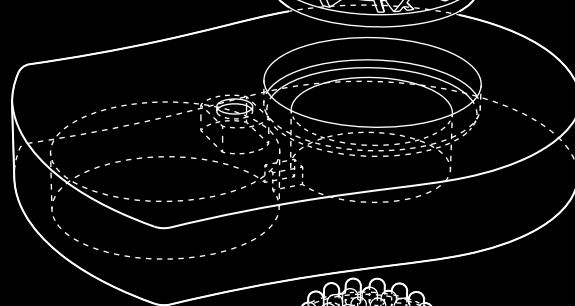
process



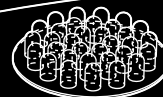
PLA bottle



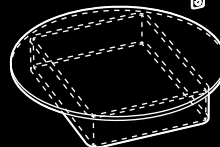
PLA Base



pressure switch



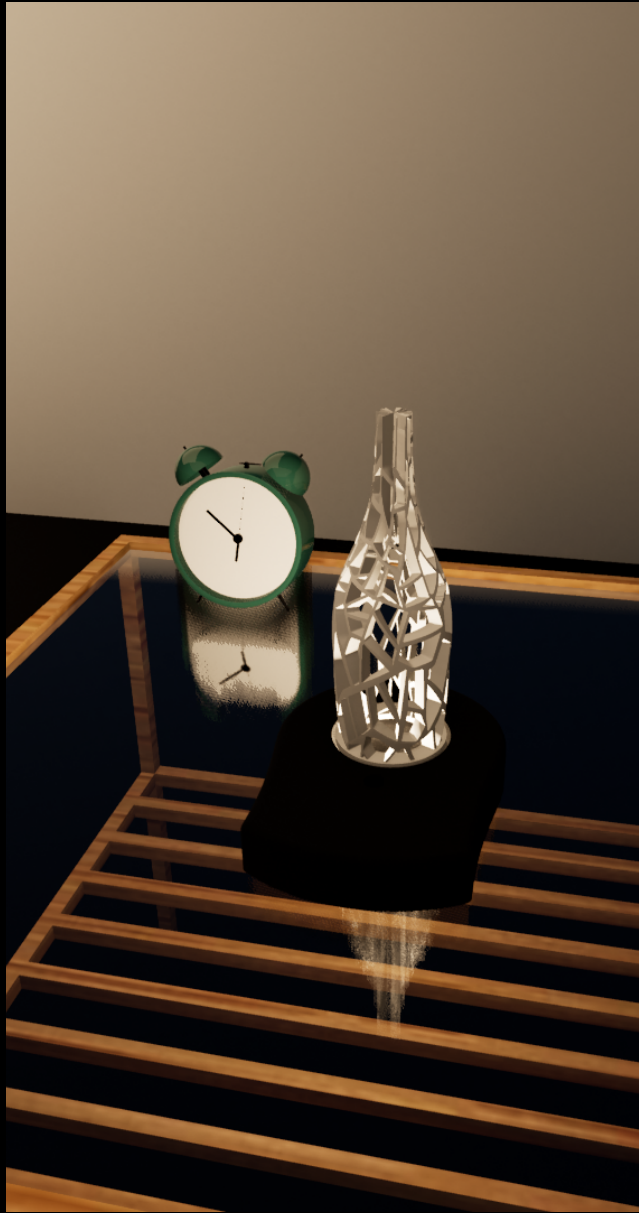
battery housing

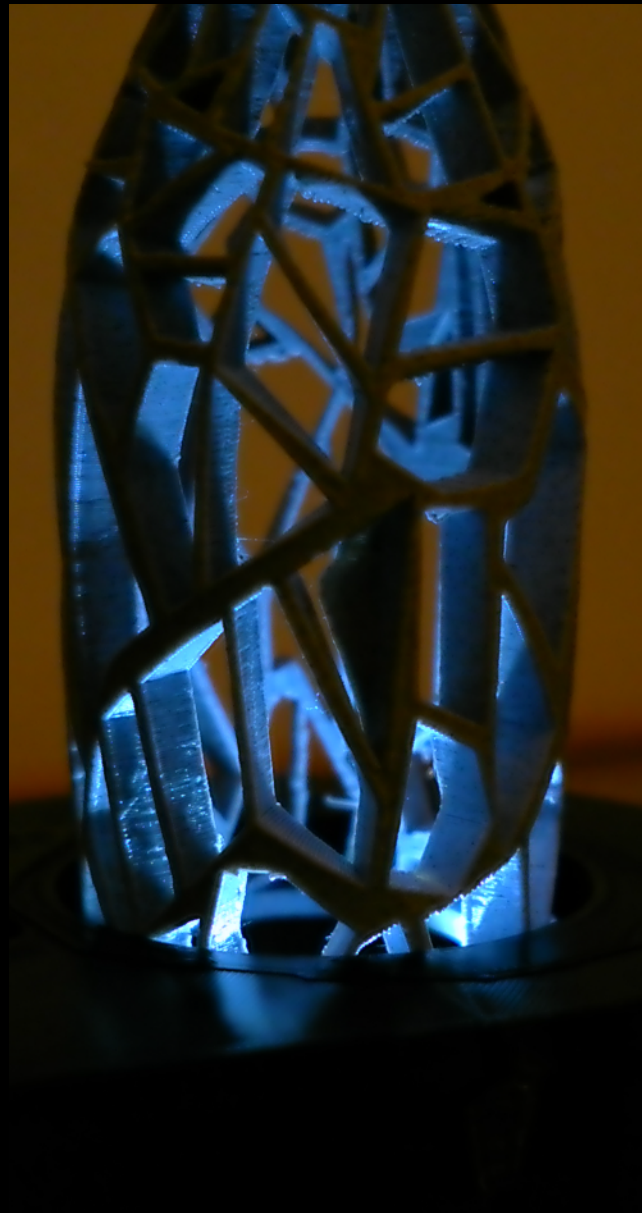


LED board

AAA









The Cracked

on youtube:

<https://youtu.be/rbawyERFDXs>